



“Somos tu mejor solución...  
Sin importar el tamaño de tus proyectos”



Síguenos en... EuroRep eurorep.mx @GrupoEuroRep EuroRep

Oficina Central  
(52) 55-5395-0305

[info@eurorep.mx](mailto:info@eurorep.mx)

Patio y Sucursal Querétaro  
(52) 442-628-2093

Oficinas Regionales  
Guadalajara/Cancún/Mérida

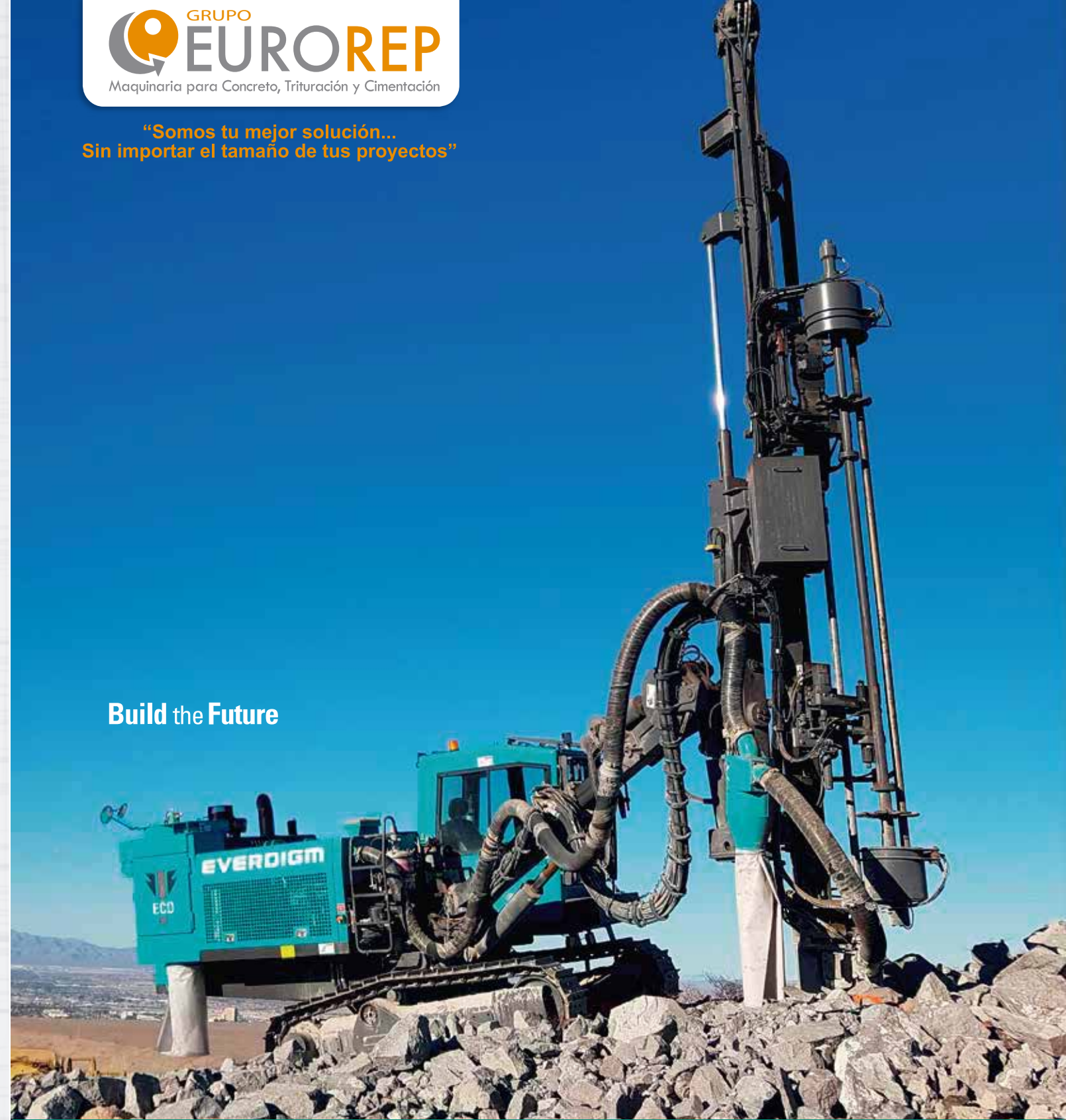
Oficina Monterrey  
(52) 81-2676-9832

[www.eurorep.mx](http://www.eurorep.mx)



“Somos tu mejor solución...  
Sin importar el tamaño de tus proyectos”

Build the Future



TOP-HAMMER DRILL RIGS  
ECD SERIES

[HTTP://WWW.EUROREP.MX/COPIA-DE-EVERDIGM](http://www.eurorep.mx/copia-de-everdigm)



# TOP-HAMMER DRILL RIGS

## ECD SERIES

HYUNDAI EVERDIGM Top-hammer drill rigs providesupreme advantageat diversified mining and quarry sites.



### Improved quality

- Productivity and dependability
- Powerful rotation unit and engine
- Serviceability and longevity
- ROPS/FOPS approved cabin in accordance with mining safety requirements
- Spacious and well designed cabin for more comfortable operation
- Durability with heavy duty parts
- Easy maintenance and fuel efficiency
- Developing Product Life cycle Management (PLM) system based on 3D design
- Constructing product reliability by utilizing structural analysis and finite elements method programs such as ANSYS and midas NFX.



### Support & Committed service

- Customized education program
- Fast response and customer oriented attitude
- Giving practical solution working with major components company
- Professional technicians and engineers with foreign language and drilling terminology



### World wide network

- HYUNDAI EVERDIGM has wide network of professional service technicians spread in every corner of the world
- They are only a local phone call away, when you need help.

### Great versatility

Operator safety and ergonomics contributes to our drill rigs high long-term value. Simple and rugged, HYUNDAI EVERDIGM also offers features such as angular and depth measurement, rotation and direction finder, all tailored to the customers specific requirements. From its very beginning, the line was never about just selling a machine that drills holes. It was always about the customer's profitability and machines that added value efficiently. We have engineered drill rigs with more operator comfort, fuel efficiency, and ease of maintenance in mind.

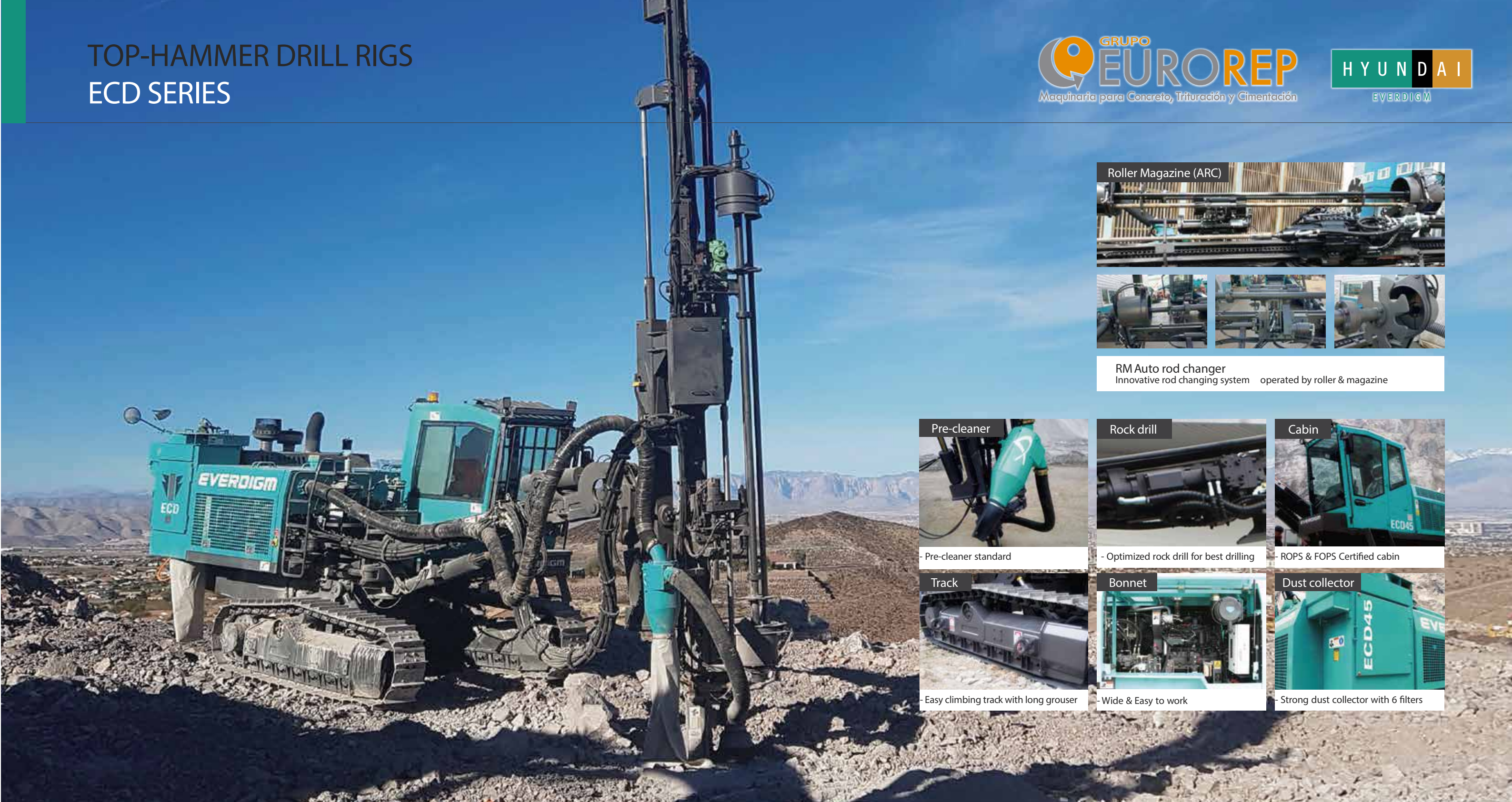
### Main application

- Open-pit mining - Quarries - Construction





# TOP-HAMMER DRILL RIGS ECD SERIES



**Roller Magazine (ARC)**  
RM Auto rod changer  
Innovative rod changing system operated by roller & magazine



**Pre-cleaner**  
- Pre-cleaner standard



**Rock drill**  
- Optimized rock drill for best drilling



**Cabin**  
- ROPS & FOPS Certified cabin



**Track**  
- Easy climbing track with long grouser



**Bonnet**  
- Wide & Easy to work



**Dust collector**  
- Strong dust collector with 6 filters



**Engine**  
CAT & CUMMINS available



**Air compressor**  
High-performance compressor



**Pump**  
2 piston & 3 gear pumps



**MCP**  
Simple & less electrics



**Water misting system**  
Water mist available



**Rear view camera**  
To check an object on the rear side for safety



**GPS & GSM**  
Remote management available



**Drilling depth & Angle indicator**  
Efficient drilling support



# TOP-HAMMER DRILL RIGS

## ECD SERIES

## HYUNDAI EVERDIGM ROCK DRILL SERIES

### Rock drill (EHD SERIES)

EHD (EVERDIGM Hydraulic Drifter) series is newly developed, integral masterpiece of HYUNDAI EVERDIGM's technology experience. It designed simply but intelligently, delivers high drilling performance with tremendous impact power.

#### Features and Benefits

- Ruggedized for surface drilling
- Strong and powerful
- Easy of operation and maintenance
- Exceptional dependability
- Service friendly
- No rods left in the hole

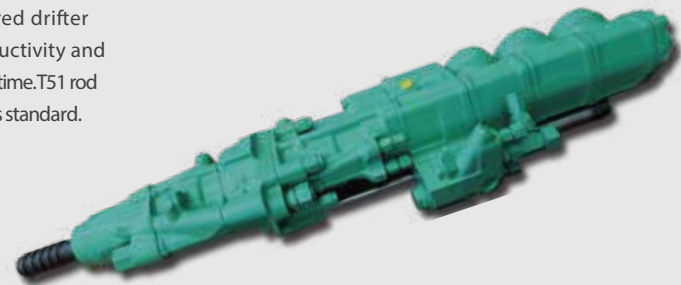


### Rock drill (HC150)

HC150 drifter made by Montabert is most preferred drifter among professional drillers with outstanding productivity and reliability. Count on proven drifter with maximum uptime. T51 rod option comes along with RP (Reverse Percussion) section as standard.

#### Features and Benefits

- Hyd. damping & reverse percussion
- Energy recovery valve system



ITEM	ECD35/ECD35E
Boom	1 stage single / 2 stage telescopic
Hole diameter	51 ~ 89mm (2" ~ 3.5")
Rod size (length)	T38, T45 (3,050 mm, 10" / 3,660 mm, 12")
ARC (number of rods)	[Standard] Rod rack (5+1)
First Rod length	3,060 ~ 3,660mm (10" ~ 12")
Maximum hole depth	18m (3,050mm Rod, 10") 22m (3,660mm Rod, 12")
Rock drill	ED150 (15kW)
Engine	Tier 1 Cummins 6BT5.9 (119kW, 160hp)
Air compressor	5.4m <sup>3</sup> /min (190 cfm), up to 10.5 bar
Dimension, transport	H 3,210mm x W 2,305mm x L 9,180mm
Weight	11,700 / 12,500 kg

ITEM	ECD40E
Boom	2 stage telescopic
Hole diameter	64 ~ 102mm (2.5" ~ 4")
Rod size (length)	T38, T45 (3,050 mm, 10" / 3,660 mm, 12")
ARC (number of rods)	[Standard] Rod rack (5+1) [ Option ] Roller Magazine (6+1)
First Rod length	3,660 ~ 4,000mm (12" ~ 14")
Maximum hole depth	25.6m (Roller Magazine ARC) 22m (Rod rack ARC) _ Optional
Rock drill	EHD185 (18.5kW)
Engine	Tier 3 Cummins QSB 6.7 ( 130kW, 175hp ) Tier 3 Caterpillar CZ1 (168kW, 225hp)
Air compressor	5.4m <sup>3</sup> /min (193 cfm), up to 10.5 bar 6m <sup>3</sup> /min (212 cfm), up to 10.5 bar
Dimension, transport	H 3,250mm x W 2,350mm x L 9,290mm
Weight	13,200 kg

ITEM	ECD45E
Boom	2 stage telescopic
Hole diameter	76 ~ 115mm (3" ~ 4.5")
Rod size (length)	T45, T51 (3,660 mm, 12")
ARC (number of rods)	[ Standard ] Roller Magazine (6+1)
First Rod length	3,660 ~ 4,000mm (12" ~ 14")
Maximum hole depth	25.6m (Roller Magazine ARC)
Rock drill	EHD210 (21kW)
Engine	Tier 3 Caterpillar CZ1 (168kW, 225hp)
Air compressor	8m <sup>3</sup> /min (232 cfm), up to 10.5 bar
Dimension, transport	H 3,250mm x W 2,350mm x L 9,290mm
Weight	14,100 kg

ITEM	ECD50E
Boom	2 stage telescopic
Hole diameter	76 ~ 127mm (3" ~ 5")
Rod size (length)	T45, T51 (3,660 mm, 12")
ARC (number of rods)	[ Standard ] Roller Magazine (6+1)
First Rod length	3,660 ~ 4,000mm (12" ~ 14")
Maximum hole depth	25.6m (Roller Magazine ARC)
Rock drill	EHD230 (21kW) or HC150 (21kW)
Engine	Tier 3 Caterpillar CZ1 (186kW, 250hp)
Air compressor	11m <sup>3</sup> /min (388 cfm), up to 10.5 bar
Dimension, transport	H 3,250mm x W 2,350mm x L 9,290mm
Weight	14,500 kg



### Original technology of HYUNDAI EVERDIGM Optional MONTABERT available

ITEM	ED150	EHD185	EHD210	EHD230	HC150
Base rig	ECD35 / ECD35E	ECD40E	ECD45E	ECD50E	ECD45E / ECD50E
Hole range	~89mm	~102mm	~115mm	~127mm	~127mm
Available rod	T38 / T45	T38 / T45	T45 / T51	T45 / T51	T45 / T51
Impact power	15.9kW	18.5kW	21kW	23kW	21kW
Impact frequency	50Hz	50Hz	50Hz	50Hz	41.7Hz
Rotation speed	200rpm	170rpm	140rpm	140rpm	130rpm
Hyd. damping	X	Std.	Std.	Std.	Std.
Reverse percussion	X	Std.	Std.	Std.	Std.
Weight	229kg	236kg	236kg	236kg	218kg
Length	953.5mm	1,284.5mm	1,284.5mm	1,284.5mm	1,437mm