



 **EVERDIGM**
"Antes: Daewoo, Hanwoo y PumpStar"

La Mejor Relación **Precio-Calidad**

ECP 33 ZX-5
Bomba Pluma
160 m³/h

Antes Daewoo / Hanwoo / PumpStar
Fabricante bajo licencia de Bombas Putzmeister
durante más de 10 años

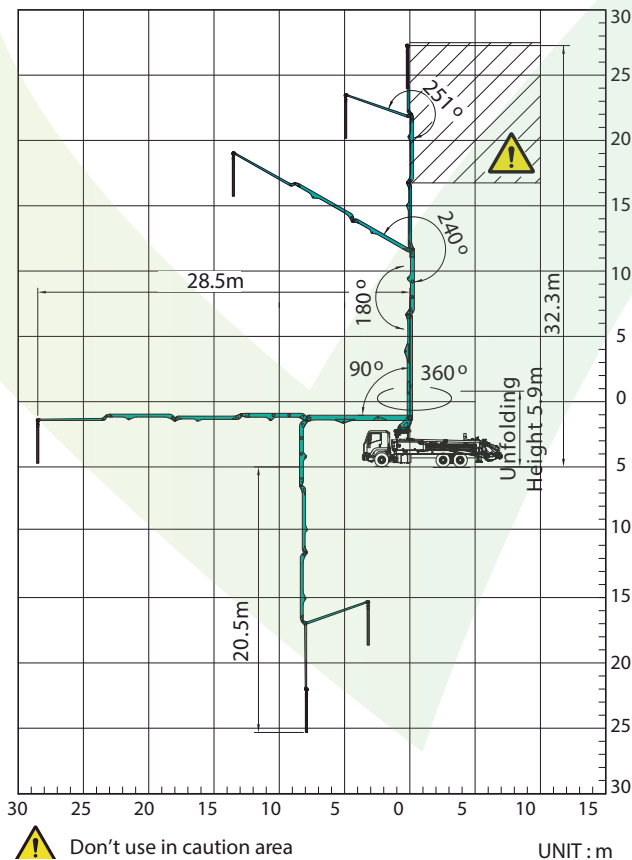
BOOM

Folding type	5-section Z-folding
Max. vertical reach	32.3m
Max. horizontal reach	28.5m
Max. depth reach	20.5m
Unfolding height	5.9m
Slewing angle	360deg.
End hose length	3(4)m
Delivery pipe dia.	125mm

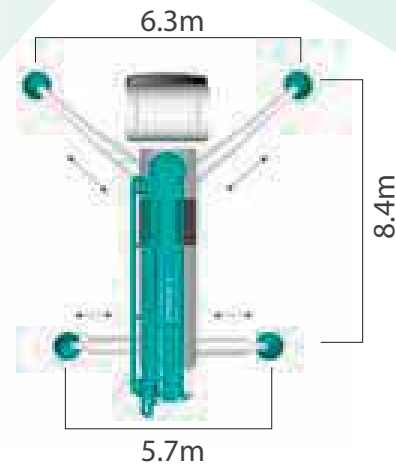
PUMP

Pump cell	2116
Control system	Closed Free Flow Hydraulic
Main pump	A4VG125x2
Concrete cylinder(mm)	230x2,100
Concrete output ² (l/m)	160
Concrete pressure(bar)	85
Strokes No.(per min.)	30
Transfer tube type	S-Tube, S2018(S2318)
Volume of hopper	600L

WORKING RANGE



OUTRIGGER SPREAD



Front outrigger type (Diagonal) Extension

Rear outrigger type Telescopic

